

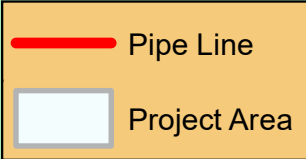
# Pipeline alignment for Al- Doha and Dheisheh Camp



**Palestine  
Polytechnic  
University**

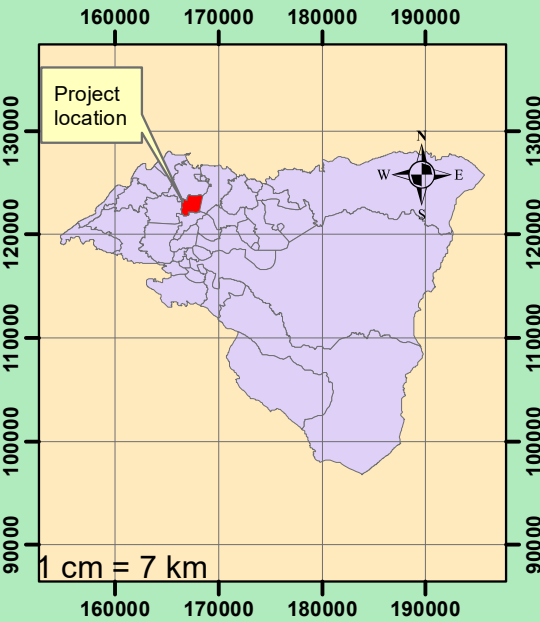
**Palestine Polytechnic University  
College Of Engineering and  
Technology**

**Project Title:**  
Flow Transient Analysis for  
AD Duheisha Pumping Station  
and the Conveing Pipeline to Al Doha  
reservoir Using Hammer\_Cad



**Created By :**  
**Mustafa Dwekat**  
**Hamza Hraishat**  
**Mohammed Jomma**

**Project Supervisor:**  
**Dr-Eng. Itissam Abuiziah**



Palestine\_1923\_Palestine\_Grid  
Projection: Cassini  
False\_Easting: 170251.555  
False\_Northing: 126867.909  
Central\_Meridian: 35.21208055555556  
Scale\_Factor: 1.0  
Latitude\_Of\_Origin: 31.73409694444445

**Fig.Number(3.5)**

